

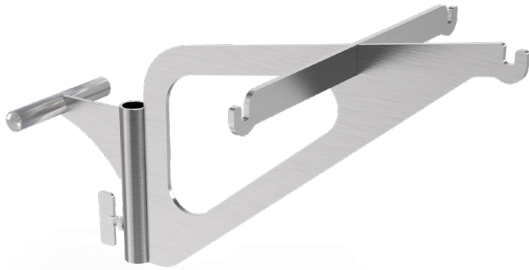


# KETTLE HOOK

USER GUIDE

 **BREEO®**

# ASSEMBLY INSTRUCTIONS



## STEP 1

Take both pieces of the kettle hook out of the box.

## STEP 2

Insert slot of the secondary piece into the primary piece of the kettle hook to create an X.

## STEP 3

Slide the kettle hook down the accessory post attached to your fire pit or Anchorpoint™ system and tighten fastener at desired height.

## STEP 4

Attach your kettle or hang food directly from the kettle hook and enjoy using your new kettle hook!





## FOR YOUR SAFETY

Always practice safety first when using the Breeo® kettle hook. When using your Breeo fire pit & accessories, exercise the same precautions you would with any open fire. Never leave your Breeo fire pit & accessories unattended, especially around children and pets.

Do not overfill your kettle hook. Do not exceed 20lbs. of weight on the 19in. kettle hook or 40lbs. of weight on the 24in. kettle hook.

Never swing the kettle hook all the way to the back of the fire pit when loaded. The weight can cause the fire pit to tip and spill the hot contents of your kettle and fire pit.

When adjusting the height of your kettle hook, or swinging it from side to side, always wear gloves or use other heat protection to avoid burns.

# HOW TO BUILD THE ULTIMATE SMOKELESS FIRE

## STEP 1

### CHOOSE YOUR FUEL.

Select a firestarter material, like shredded newspaper or cardboard, a dry, thinly split softwood for kindling, and a dry, split hardwood for your main fuel. Make sure your fuel is less than 4" in diameter. Focus on creating as much airflow as possible throughout the whole fire building process.

## STEP 2

### BUILD A LOG CABIN.

Start with 2 full-size pieces of cord wood and lay them caddy-corner on the X Airflow™ system across from each other. Then, lay two pieces of kindling perpendicular across those. Fill the inside square with your firestarter. Continue with the pattern in kindling until it approaches the top of your fire pit, filling the center with firestarter as you go, if you're using newspaper or cardboard. If you're using another type of firestarter, you can place it in the middle when you start building, but there's no need to fill the whole structure with it. Taper the "cabin" inward as you get close to the top.

## STEP 3

### LIGHT IT UP.

Using a grill lighter or a long match, light the firestarter at the bottom of the log cabin. We do NOT recommend using regular matches, as they can be harder to use when you're reaching into the fire pit.

## STEP 4

### FEED THE FLAMES.

Once you've got a tiny blaze going, start adding cord wood without disrupting or knocking over the kindling cabin. Starting with smaller cord wood pieces and gradually using larger ones as the fire grows, lay the pieces toward the perimeter of the bottom of the fire pit. This will help your fire spread evenly around your fire pit.

## STEP 5

### LET IT BURN OUT.

When you're done with your fire, patiently wait for the fire to burn out on its own. Don't pour water on it, and never leave your fire unattended. If you do need to walk away, always cover with a spark screen and make sure there's nothing near the fire pit that could catch on fire or be damaged. Clean out the ashes every 4-5 burns once the fire pit cools to maintain airflow and always have a smokeless fire.





Breco, LLC warrants to the original purchaser that the Breco Fire Pits and Accessories are free from workmanship and material defects during the lifetime of the original purchaser. In addition Breco, LLC warrants no rust through or burn through for a period of five (5) years from purchase. If a product is covered by this limited warranty, Breco, LLC, at its option, will repair or replace with a new product free of charge, excluding any applicable shipping and handling charges. If the product being warranted has been discontinued, the replacement product will be of equal or similar value. Altering any Breco product, or using the product in any way other than the intended use, will void this Lifetime Warranty. Except as provided above, no warranty is offered on rust, paint or finishes due to being made with material with potential for corrosion. Steel products will develop a natural iron oxide patina over time.

Breco, LLC's liability and obligation is limited to repair or replacement of the product, at their option. The purchaser must provide Breco, LLC with photos of the product's defects for evaluation. Upon approval of warranty, Breco, LLC will issue a return for repair, or return for exchange of the defective product.

This warranty does not cover damage or product failure caused by normal wear and tear, accident, misuse, negligence, tampering, modifications, act of war, overloading, improper attachment, improper maintenance, or failure to maintain. Breco, LLC is held harmless for any injury or death caused by the misuse of this product. This warranty does not cover damage caused by proper or improper use of our products to any surrounding surfaces, structures, or furnishings. This includes, but is not limited to, discoloration or damage to a patio or deck surface, furniture, house, or any other structure.

This warranty gives you specific legal rights providing said product is put to its proper designated use.

THIS WARRANTY IS EXPRESSLY IN LIEU OF ALL OTHER WARRANTIES, EXPRESS OR IMPLIED, INCLUDING THE WARRANTY OF MERCHANTABILITY AND FITNESS FOR A PARTICULAR PURPOSE. NO ORAL AGREEMENT, GUARANTEE, PROMISE, REPRESENTATION OR WARRANTY SHALL BE BINDING. IN NO EVENT WILL BRECO, LLC BE LIABLE FOR ANY SPECIAL, INDIRECT, INCIDENTAL OR CONSEQUENTIAL DAMAGES EVEN IF BRECO, LLC HAS BEEN ADVISED OF THE POSSIBILITY OF SUCH DAMAGES AND EVEN IF BRECO, LLC HAS KNOWLEDGE THAT FAILURE TO PERFORM COULD CAUSE CONSEQUENTIAL ECONOMIC LOSSES. IN ANY EVENT, CUMULATIVE DAMAGES FOR BREACH OF THIS WARRANTY WILL BE LIMITED TO THE AMOUNT ACTUALLY PAID TO BRECO, LLC FOR THE PRODUCT. THIS PARAGRAPH SHALL APPLY TO ALL ACTIONS RELATED TO THE PRODUCT, WHETHER BASED ON TORT, CONTRACT OR OTHER THEORIES. THE PURCHASER ACKNOWLEDGES THAT THIS PARAGRAPH ALLOCATES THE RISK OF PRODUCT FAILURE BETWEEN BRECO, LLC AND THE PURCHASER, AND THAT THIS ALLOCATION IS REFLECTED IN THE PRICE PAID.

 **BRECO**

**WWW.BRECO.CO**

**(800) 413-9848**

**CONTACT@BRECO.LLC.COM**

